

BEEF UP YOUR PROFITS WITH SOME LINE ONE INFLUENCE

ERVIE HEREFORDS & AIRIES ABERDEEN-ANGUS 2025 SPRING BULL SALE



THURSDAY 6TH FEBRUARY AT THE FARM
Selling 37 Hereford + 9 Aberdeen Angus bulls
Hardy, rising 2-year-old bulls
Outwintered, unpampered & ready for work



ERVIE LINE ONE HEREFORDS - *They're like peas in a pod!*



WE SPECIALISE IN SELLING NATURALLY REARED BULLS
WITH PROBLEM-FREE, HIGH MATERNAL GENETICS

Established 1969 and selling over 80 bulls per year
to repeat suckler & dairy customers

**A BREEDING PROGRAM
TRIED & TESTED!!**



WELCOME to our 16th consecutive on-farm Spring Bull Sale.

Thank you for your interest. As a family, we appreciate your support and realise that to earn it our bulls must produce calves that will grow and leave good profit. We are confident that this crop of bulls won't disappoint.

Line One influence. This year is our 14th crop of bulls with Line One influence, and as before they are true "red-meat from grass" bulls. These bulls will produce uniform crops of valuable calves.

Credit for the uniform, problem-free cowherd we have today is due to the imported Line One Hereford genetics we have been using since 2006.

Lowering the cost of production. As farmers, we are all still facing pressure from high costs. Efficient, low-cost production is one way to meet these challenges and the type of cattle we are producing thrive on a system with paired-back costs. Our breeding program includes selection for improved udder & teat conformation in the cow herd and good scrotal size for our bulls. Both these traits are good for the efficiency of all our herds by reducing replacement, labour & vet costs and by increasing herd output. Our average scrotal measurements are increasing slightly year on year.

How we raise them. Our calves are reared and weaned without creep-feed in order to measure herd's true maternal performance from grass. After weaning, the bulls and heifers are reared in their full groups, with no preferential feeding. This allows for recording and assessment of true natural performance. We ultrasound the entire bull and heifer crop each summer for muscle depth and back fat to provide meaningful EBV's on all the bulls. Dam's udder & teat assessment scores are supplied for herd owners looking to improve these important maternal traits.

The bulls have been outwintered at grass with a silage feed trailer provided and since October fed 3kg/head/day of a 16% CP blend. Once again, the weather has been wet and stormy, with mud in abundance. I watch the cattle production sales in America with envy at how they can produce large groups of bulls for sale with hair standing up and shining and no mud in sight!

Modern methods. We will be accepting online bids as well as the bids from the ringside again this year. Buying over the internet may not be for everyone, but I have confidence, with the videos taken by our four daughters to present the bulls truthfully, plus the relevant information we provide in the catalogue, (including actual birth weight, dam's udder/teat score, scrotal measurement and a meaningful table of EBV's), busy farmers can buy online with confidence. Add to this the pre-sale veterinary health & fertility check and Johnes blood test, we are confident bulls bought online will not disappoint.

Please study the merit of each bull, using your eye and the data provided to help you choose the bull with the best genetics and type to suit your herd. Ask me for any extra information not already provided. Regarding our calving ease figures, as a herd, we have no extreme birth weights and it is rare for us to assist at birth.

We hope you find your next bull here today!

Best regards,

John, Alexandra, Rosie, Ellen, Olivia and Kristina



ERVIE HEREFORDS & AIRIES ANGUS

2025 SPRING BULL SALE

THURSDAY 6TH FEBRUARY
AT THE FARM

Auction starts at 1:00pm

THE BEST OF BOTH WORLDS:

• • •

Dual ringside & online bidding with live auction-ring webcam plus videos of the bulls over the internet

• • •

Auctioneer is Harry Begg, Dumfries. T: 07713 569593

• • •

Bulls penned for inspection from 10:30am on sale day

• • •

Lunch & refreshments at noon

SALE DAY PHONES

OLIVIA: 07311 297272

ELLEN: 07841 033748

KRISTINA: 07759 090000

Mains of Airies, Ervie-Kirkcolm,
Stranraer, Wigtownshire. DG9 0RD



The LIVESTOCK LINK

How to bid Online!

Where possible and to avoid disappointment, please register to bid at least 24 hours in advance of the sale. This gives you time to familiarise yourself with the bidding process. We shall endeavour to process short notice registrations during the sale, but rush is not conducive to success.

You can register to watch or bid online through **The Livestock Link** by following these instructions.

- ▶ **Visit our website, www.thelivestocklink.com**
- ▶ **Click the “Auctions” tab**
- ▶ **Click on “Click Here to Register”**
- ▶ **Enter your e-mail address and password and fill out all your contact information**
- ▶ **Fill out your Banking Information. If you are only viewing the sale and do not wish to bid, this information can be left blank.**
- ▶ **Check the checkbox at the bottom of the page that says “I’m not a robot” to prove you are a real person**
- ▶ **Click “Register” at the bottom of the page**
- ▶ **You will receive an email with a link to activate your account**
- ▶ **Contact Aaron Friedt at 001.701 590-9597 for help or with any questions**

You will receive an email when you are approved for bidding. All applications will be reviewed and processed promptly. You will receive a bidder number only after you have made a purchase in the sale, and that number will only be used at that sale. When the auction is completed, we will confirm the online sales with each buyer by email. Payment on invoice after the sale to be made to C & D Auctions with 25% downpayment and remainder due before shipment in April.

To use our service, you must have access to High-Speed Internet. Those with unreliable internet speeds may consider using our proxy bid service.

Questions?

Contact Jared Peterson at 001.605.920.9261 or Support at 001605 920-9261.

CONTACTS FOR REGISTRATION AND BIDDING ASSISTANCE:

Ellen	tel: 07841 033748	email: ellenginadouglas@outlook.com
Olivia	tel: 07311 297272	email: olivia.doug3@gmail.com
Kristina	tel: 07759 090000	email: kikidouglas28@gmail.com
Rosie	tel: 001.605 210-3319	email: rosiedouglas2@gmail.com

For registration instruction and general sale information visit:
www.ervieherefords.co.uk

SALE INFORMATION

- ▶ Again, this year you can follow our bull sale on-line with live streaming of the sale as the bulls go through, as well as videos of each bull taken in the coral. On-line bidding will be real-time with auctioneer taking both internet bids and sale ring bids.
- ▶ Registration to bid online is straightforward and should be completed preferably by the 8th February. **If you have registered with The Livestock Link for a previous sale, it is unnecessary to re-register. Simply log in with your original username and password.**
- ▶ Just contact any of us for help if you have difficulty in registering.

If you want to find out more information about our online sale hosts, the **American Livestock Link**, visit their website: www.thelivestocklink.com

Our auctioneer is **Harry Begg**, Dumfries. Tel: **07713 569593**

SOME LOCAL ACCOMMODATION



NEPTUNES REST GUEST HOUSE, Stranraer	Tel: 01776 704729
NORTH WEST CASTLE HOTEL, Stranraer	Tel: 01776 704413
CORSEWALL LIGHTHOUSE HOTEL, Kirkcolm, Stranraer	Tel: 01776 853220
THE CROWN HOTEL, Portpatrick, Stranraer	Tel: 01776 810261
KNOCKINAAM LODGE, Portpatrick, Stranraer	Tel: 01776 810471

TERMS AND CONDITIONS:

Please contact us if you have any questions or concerns pertaining to these sale terms and conditions.

PAYMENT:

All sales are cash and in pounds sterling. The auction will be conducted by Harry Begg (Tel. 0771 356 9593) from Dumfries Mart and payment to be made to him at close of sale unless by prior agreement. Online buyers will be invoiced by email. Bulls being left at Mains of Airies require 25% paid on sale day and the remainder cleared with the auctioneer one week before uplift by mid-April.

TRANSPORTATION:

Bulls can be picked up any time after payment has been made. All transportation expenses to be the responsibility of the buyer. We will endeavour to assist with transport to a convenient meeting point within the UK mainland.

ANNOUNCEMENTS:

Bulls can stay at Mains of Airies up to mid-April and will be cared for by us but at the buyer's risk. Any death or injury after the animal is sold is at the buyer's risk. **Insurance is advised.**

LIABILITY:

Anyone attending the farm to view the stock does so at their own risk.

LOT WITHDRAWAL:

We reserve the right to withdraw any animal from the sale.

HEALTH & BREEDING GUARANTEE:

Latest routine four-yearly clear **Tuberculosis Test** completed **24th December 2021.**

The entire adult herd is **Johnes tested** along with the TB test every 4 years as cost-effective surveillance to ensure there is no Johnes development within the herd. **The sale bulls for 2025 were blood-tested on 17/01/2025 and all tested Negative.**

The herd is BVD accredited. The breeding herd has been on a strict Lepto & BVD vaccination programme since 2001, with IBR vaccination since 2017. All the sale bulls require their booster vaccines by mid July.

Our customers value our robust disease biosecurity, the high health status and remoteness of our closed herd.

The bulls had a fertility examination by our vet 17/01/2025 and all are normal and fertile. (Scrotal measurements printed in catalogue.)

BULL WARRANTY:

All bulls sold are warranted stock getters, fertile and capable of natural service.

Any claim of bull infertility must be made after 1 month from the date of movement and within 9 months from the date of the sale and must be backed by a written statement from a practising veterinary surgeon confirming the bull to be infertile. The vet must confirm that the infertility is not due to either injury or infection after the sale.

Any bull proving to be infertile shall either be replaced to the satisfaction of the buyer or refunded the entire purchase price.

SIRES



Ervie L1 Achiever 192633 is senior herd sire at Towford and was our high-seller in 2021. Very good son of RL1 151973 and has bred well at Towford.



Ervie RL1 Achiever 202723 was used as a junior sire on heifers for 2 seasons and did an excellent job for us.



Ervie L1 Achiever 202834 also did a good job as a junior sire on heifers before being sold to a dairy farm.

SIRES



Ervie L1 Achiever 202813 was used firstly as a junior sire on heifers and since then as a senior sire on cows.



Ervie L1 Achiever 202818 was also used firstly as a junior sire on heifers and since then as a senior sire on cows.



Towford L1 Achiever 212946 is junior herd sire at Towford and is by our 151966N and has the successful 91155H cow as his dam. He is breeding extremely well at Towford.

SIRES



Ervie L1 Achiever 192655 is a tall long clean bull with great maternal genetics behind him. His dam was a flushmate to our elite sire, L1 Achiever 91151H.



Ervie L1 Achiever 182440 was used for 3 seasons and then sold to a commercial herd. His dam was an exceptional heifer with perfect udder/teats.



Ervie L1 Achiever 182491 was a bull of tremendous stature and attractive and quiet natured. He was deep bodied, thick-topped and extremely easy fleshing type.

SIRES



Ervie RL1 Achiever 151966N has made a large contribution to our herd, mainly through use on daughters of our successful 1151 sire. He consistently raised our yearling weights and passed on his upstanding style and character.



Fordel Earl Astrix U299 was bought mainly to follow on from two years inseminating with SAV Solid Gold. He has done everything we wanted and has proved to be a great herd sire for us. His calves are born easily unassisted and grow quickly. They are the type we like. His daughters make fine cows.



HW Diablo W206 very attractive bull with high maternal genetics who we bought as a yearling in 2021 for use on mainly daughters of Earl Astrix but used across the herd in 2024. Does everything we wanted – easy calving, growthy attractive calves.

SALE FEATURES



LOT 4



LOT 5

SALE FEATURES



LOT 7



LOT 9

SALE FEATURES



LOT 12



LOT 36

SALE FEATURES



LOT 38



LOT 45



THE TOWFORD BULLS

Many of the bulls catalogued here are registered with the Towford prefix. In 2020 we sold a quantity of in-calf cows to Alan Anderson & family, Towford Farm, Jedburgh. Alan farms an upland farm with a good dry grassy hill on which he outwinters the Hereford cows. After visiting Towford a couple of times, we decided that the herd health status and biosecurity are on a par with ours and Alan's herd management and method of rearing calves are almost identical to our own. Towford herd genetics are pure "Ervie" bloodlines and it we can easily depend on the genetics.

After considering all of this, we bought & reared his 2021 crop of bull calves at weaning. (All the calves were in utero pregnancies when Alan bought his cows from us in 2020.) Subsequently, each November, we have purchased the crop of Towford bull calves at weaning to develop for our sales.

LOT 1 TOWFORD ACHIEVER 333258

b.1/4/2023

Calving Ease DIR (%)	0.2
Calving Ease DTRS (%)	5.5
Birth Weight (kg)	1.7
Actual Birth Wt. (kg)	41

200 Day Weight (kg)	37
400 Day Weight (kg)	73
200 Day Milk (kg)	19
Actual Scrotal Size (cm)	38

Eye Muscle Area (sq cm)	2.2
Terminal Index	32
Self Replacing Index	40
Dam's Udder/ Teat Rating	



NOTES: Great set of EBV's. Dam is from the Achievement A family. Heifers first calf.

LOT 2 TOWFORD ACHIEVER 463271

b.9/4/2023

Calving Ease DIR (%)	4.4
Calving Ease DTRS (%)	5.1
Birth Weight (kg)	0
Actual Birth Wt. (kg)	37

200 Day Weight (kg)	29
400 Day Weight (kg)	51
200 Day Milk (kg)	20
Actual Scrotal Size (cm)	38

Eye Muscle Area (sq cm)	2.6
Terminal Index	25
Self Replacing Index	31
Dam's Udder/ Teat Rating	



NOTES: Smart looking bull with muscle and shape. Heifers first calf. Dam is from the Peach family. Light birthweight bull.

LOT 3 TOWFORD ACHIEVER 333286

b.10/4/2023

Calving Ease DIR (%)	3.5
Calving Ease DTRS (%)	4.2
Birth Weight (kg)	0.6
Actual Birth Wt. (kg)	42

200 Day Weight (kg)	29
400 Day Weight (kg)	55
200 Day Milk (kg)	22
Actual Scrotal Size (cm)	38

Eye Muscle Area (sq cm)	1.7
Terminal Index	29
Self Replacing Index	36
Dam's Udder/ Teat Rating	6/6



NOTES: Long stylish bull with great outlook. Dam is a good milky cow from the Gypsy family.

LOT 4 TOWFORD ACHIEVER 333272

b.9/4/2023

Calving Ease DIR (%)	-0.2
Calving Ease DTRS (%)	5.1
Birth Weight (kg)	1.9
Actual Birth Wt. (kg)	40

200 Day Weight (kg)	34
400 Day Weight (kg)	70
200 Day Milk (kg)	20
Actual Scrotal Size (cm)	39

Eye Muscle Area (sq cm)	3.6
Terminal Index	32
Self Replacing Index	40
Dam's Udder/ Teat Rating	



NOTES: Outstanding sire prospect with great length & volume. Fantastic set of balance figures and good maternal. Dam is from the Noreen family. Heifers first calf.



LOT 5 AIRIES SALVADOR Z165 b.7/5/2023

Calving Ease DIR (%)	3.1
Calving Ease DTRS (%)	4.1
Birth Weight (kg)	4.6
Actual Birth Wt. (kg)	36

200 Day Weight (kg)	57
400 Day Weight (kg)	101
200 Day Milk (kg)	18
Actual Scrotal Size (cm)	41.5

Eye Muscle Area (sq cm)	6.3
Terminal Index	47
Self Replacing Index	62
Dam's Udder/ Teat Rating	8/8

— QUAKER HILL RAMPAGE 0A36 (SS) (IMP) #16925771(US)42
 — RAWBURN BANNOCKBURN T628 #UK562106 602628
 — NICHOLS BONNIE Y292 (ET) (IMP) #17081895(US)42
Sire: HW DIABLO W206 #UK546977 703206
 — HW EVANDER S051 #UK546977 101051
 — HW DUCHESS OF WINDSOR U479 #UK546977 102479
 — HW DUCHESS OF WINDSOR S211 #UK546977 701211

AIRIES SALVADOR Z165 #UK583609 603165

— CHEERBROOK ASTERIX L017 #UK173135 300017
 — FORDEL EARL ASTERIX U299 #UK542511 705299
 — FORDEL EMPRESS L740 #UK542511 302740
Dam: AIRIES SYLVIA W751 #UK583609 502751
 — S A V SOLID GOLD 9187 (AI) (IMP) #16396545(US)37
 — AIRIES SYLVIA U281 #UK583609 402281
 — AIRIES SYLVIA L335 #UK583609 301335

NOTES: Great looking prospect with a magnificent set of figures. Dam is an Earl Astrix daughter. Heifers first calf. Light birthweight bull.



LOT 6 TOWFORD ACHIEVER 333294 b.11/4/2023

Calving Ease DIR (%)	4.1
Calving Ease DTRS (%)	5.6
Birth Weight (kg)	1.3
Actual Birth Wt. (kg)	42

200 Day Weight (kg)	33
400 Day Weight (kg)	65
200 Day Milk (kg)	22
Actual Scrotal Size (cm)	37.5

Eye Muscle Area (sq cm)	2.7
Terminal Index	31
Self Replacing Index	39
Dam's Udder/ Teat Rating	7/8

— HH Advance 0132X (Ser/Sire) {DLF IEF HYF} 43073963
 — Ervie RL1 Achiever 151973N (DH) AI ET (Imp USA) UK583609 401973
 — HH Miss Advance 7063T (Donor) {DLF IEF HYF} 42785298
Sire: Ervie L1 Achiever 192633 (DH) {HYF} UK583609 602633
 — Ervie L1 Achiever 91151H (DH) AI ET (Imp USA) UK583609 101151
 — Ervie L1 Achievement 172210D (DH) UK583609 302210
 — Ervie L1 Achievement 81037D (DH) AI ET (Imp USA) UK583609 601037

TOWFORD ACHIEVER 333294 UK561976 103294

— CL 1 Domino 477P (Ser/Sire) 42482436
 — Ervie L1 Achiever 91149H (DH) AI ET (Imp USA) UK583609 601149
 — HH Miss Advance 5209R (Donor) {DLF IEF HYF} 42576465
Dam: Ervie Pansy 131629 (DH) UK583609 301629
 — Ervie L1 Achiever 882A (DH) ET (Imp USA) UK583609 500882
 — Ervie Pansy F1130 (DH) UK583609 101130
 — Ervie Pansy C788 (DH) UK583609 200788

NOTES: Good looking dark bull. Dam is a good uddered cow from the Pansy family.

LOT 7 TOWFORD ACHIEVER 333273

b.9/4/2023

Calving Ease DIR (%)	2.3
Calving Ease DTRS (%)	3
Birth Weight (kg)	2.3
Actual Birth Wt. (kg)	44

200 Day Weight (kg)	39
400 Day Weight (kg)	79
200 Day Milk (kg)	24
Actual Scrotal Size (cm)	40.5

Eye Muscle Area (sq cm)	3.9
Terminal Index	39
Self Replacing Index	46
Dam's Udder/ Teat Rating	9/9



NOTES: Amazing set of EBV's right across the board. Dam is a perfect uddered cow from the Achievement A family.



LOT 8 TOWFORD ACHIEVER 333262

b.2/4/2023

Calving Ease DIR (%)	1.3
Calving Ease DTRS (%)	5.6
Birth Weight (kg)	1.7
Actual Birth Wt. (kg)	38

200 Day Weight (kg)	36
400 Day Weight (kg)	68
200 Day Milk (kg)	20
Actual Scrotal Size (cm)	39

Eye Muscle Area (sq cm)	2.7
Terminal Index	34
Self Replacing Index	42
Dam's Udder/ Teat Rating	



NOTES: Good lengthy bull from the Narcissi family. High scoring set of EBV's. Heifers first calf. Light birthweight bull.

LOT 9 TOWFORD ACHIEVER 333292

b.11/4/2023

Calving Ease DIR (%)	2.9
Calving Ease DTRS (%)	2.7
Birth Weight (kg)	1.5
Actual Birth Wt. (kg)	43

200 Day Weight (kg)	33
400 Day Weight (kg)	65
200 Day Milk (kg)	20
Actual Scrotal Size (cm)	42

Eye Muscle Area (sq cm)	3.2
Terminal Index	31
Self Replacing Index	38
Dam's Udder/ Teat Rating	6/6

— HH Advance 0132X (Ser/Sire) {DLF IEF HYF} 43073963
 — Ervie RL1 Achiever 151973N (DH) AI ET (Imp USA) UK583609 401973
 — HH Miss Advance 7063T (Donor) {DLF IEF HYF} 42785298
Sire: Ervie L1 Achiever 192633 (DH) {HYF} UK583609 602633
 — Ervie L1 Achiever 91151H (DH) AI ET (Imp USA) UK583609 101151
 — Ervie L1 Achievement 172210D (DH) UK583609 302210
 — Ervie L1 Achievement 81037D (DH) AI ET (Imp USA) UK583609 601037

TOWFORD ACHIEVER 333292 UK561976 603292

— Ervie L1 Achiever 91168G (DH) AI ET (Imp USA) UK583609 401168
 — Ervie L1 Achiever 141780 (DH) {DLF IEF HYF} UK583609 701780
 — Ervie L1 Achievement 81038E (DH) AI ET (Imp USA) UK583609 701038
Dam: Ervie Dowager 172267 (DH) UK583609 402267
 — Ervie Builder C740 (DH) AI UK583609 300740
 — Ervie Dowager F1030 (DH) UK583609 601030
 — Dieulacresse Dowager 11th (DH) UK166017 600204

NOTES: Quality, long dark bull from a good milky Dowager cow.



LOT 10 TOWFORD ACHIEVER 363260

b.2/4/2023

Calving Ease DIR (%)	4.6
Calving Ease DTRS (%)	3.8
Birth Weight (kg)	0.3
Actual Birth Wt. (kg)	39

200 Day Weight (kg)	33
400 Day Weight (kg)	67
200 Day Milk (kg)	20
Actual Scrotal Size (cm)	40.5

Eye Muscle Area (sq cm)	3.1
Terminal Index	31
Self Replacing Index	38
Dam's Udder/ Teat Rating	

— HH Advance 0132X (Ser/Sire) {DLF IEF HYF} 43073963
 — Ervie RL1 Achiever 151966N (DH) AI ET (Imp USA) UK583609 401966
 — HH Miss Advance 7063T (Donor) {DLF IEF HYF} 42785298
Sire: Towford L1 Achiever 212946 {HYF} UK561976 302946
 — CL 1 Domino 477P (Ser/Sire) 42482436
 — Ervie L1 Achievement 91155H (DH) AI ET (Imp USA) UK583609 501155
 — HH Miss Advance 5209R (Donor) {DLF IEF HYF} 42576465

TOWFORD ACHIEVER 463260 (DH) UK561976 203260

— Ervie L1 Achiever 91151H (DH) AI ET (Imp USA) UK583609 101151
 — Ervie L1 Achiever 162044 (DH) {HYF} UK583609 502044
 — Ervie L1 Achievement 91154F (DH) AI ET (Imp USA) UK583609 401154
Dam: Towford Edith 212994 (DH) UK561976 202994
 — Ervie L1 Achiever 91167K (DH) AI ET (Imp USA) UK583609 301167
 — Ervie L1 Achievement 171778E (DH) TF UK583609 501778
 — Ervie L1 Achievement 111390E (DH) UK583609 201390

NOTES: Do not overlook this big long good bull. Heifers first calf from the good milky Achievement E family. Light birthweight bull.

LOT 11 AIRIES SHOLTO Z172 b.16/5/2023

Calving Ease DIR (%)	
Calving Ease DTRS (%)	
Birth Weight (kg)	
Actual Birth Wt. (kg)	32

200 Day Weight (kg)	
400 Day Weight (kg)	
200 Day Milk (kg)	
Actual Scrotal Size (cm)	39.5

Eye Muscle Area (sq cm)	
Terminal Index	
Self Replacing Index	
Dam's Udder/ Teat Rating	8/8

— S A V NET WORTH 4200 (SS) (IMP) #14739204(US)32
 — CHEERBROOK ASTERIX L017 #UK173135 300017
 — JUST-ROCK ANDEE'S DEAL 679P (ET) (IMP) #1222908(CA)35
Sire: FORDEL EARL ASTERIX U299 #UK542511 705299
 — FORDEL POLAND G154 #UK542511 601154
 — FORDEL EMPRESS L740 #UK542511 302740
 — FORDEL EMPRESS Y497 #UKPA001000497

AIRIES SHOLTO Z172 #UK583609 603172

— S A V NET WORTH 4200 (SS) (IMP) #14739204(US)32
 — S A V SOLID GOLD 9187 (AI) (IMP) #16396545(US)37
 — A C DUKE GIRL 57 #15180024(US)
Dam: AIRIES SYLVIA T276 #UK583609 602276
 — PRIESTLAND LORD JOHN G224 #UK9151904 17224
 — AIRIES SYLVIA M514 #UK583609 701514
 — AIRIES SYLVIA A140 #UK583609 500140

NOTES: Quality bull from a SAV Solid Gold dam with a good track record. Her bulls have sold to £5200, £3500 & £3000. Highly maternal. Light birthweight bull. Pedigree registered bull. EBV figures will be updated on next data run.

LOT 12 ERVIE ADVANCE 303095 b.25/4/2023

Calving Ease DIR (%)	2.8
Calving Ease DTRS (%)	5.5
Birth Weight (kg)	1.3
Actual Birth Wt. (kg)	35

200 Day Weight (kg)	37
400 Day Weight (kg)	73
200 Day Milk (kg)	20
Actual Scrotal Size (cm)	38.5

Eye Muscle Area (sq cm)	3.8
Terminal Index	36
Self Replacing Index	44
Dam's Udder/ Teat Rating	8/8

— Ervie L1 Achiever 131601 (DH) {DLF IEF HYF} UK583609 301601
 — Ervie L1 Achiever 162152 (DH) TM {HYF} UK583609 102152
 — Ervie L1 Achievement 111390E (DH) UK583609 201390
Sire: Ervie RL1 Achiever 202723 (DH) {HYF} UK583609 502723
 — HH Advance 0132X (Ser/Sire) {DLF IEF HYF} 43073963
 — Ervie RL1 Achievement 151964N (DH) AI ET (Imp USA) UK583609 201964
 — HH Miss Advance 7063T (Donor) {DLF IEF HYF} 42785298

ERVIE L1 ADVANCE 233095 (DH) UK583609 603095

— HH Advance 0132X (Ser/Sire) {DLF IEF HYF} 43073963
 — Ervie RL1 Achiever 151973N (DH) AI ET (Imp USA) UK583609 401973
 — HH Miss Advance 7063T (Donor) {DLF IEF HYF} 42785298
Dam: Ervie Pansy 202847 (DH) {HYF} UK583609 302847
 — Ervie Achiever 141858 (DH) {DLF IEF HYF} UK583609 101858
 — Ervie Pansy 172330 (DH) UK583609 402330
 — Ervie Pansy 141876 (DH) UK583609 501876

NOTES: Great looking lengthy bull with a great looking set of figures. He is the complete package for easy calving, growth, muscle and high maternal. The dam is a near perfect udder/teats member of the Pansy family. Heifers first calf. Light birthweight bull.



LOT 13 TOWFORD ACHIEVER 333291

b.11/4/2023

Calving Ease DIR (%)	5.2
Calving Ease DTRS (%)	4
Birth Weight (kg)	1.1
Actual Birth Wt. (kg)	40

200 Day Weight (kg)	34
400 Day Weight (kg)	68
200 Day Milk (kg)	22
Actual Scrotal Size (cm)	39.5

Eye Muscle Area (sq cm)	2.7
Terminal Index	31
Self Replacing Index	39
Dam's Udder/ Teat Rating	9/9



NOTES: Another good type of bull from a Pansy cow with perfect udder & teat scoring.

LOT 14 ERVIE L1 ADVANCE 233131

b.16/5/2023

Calving Ease DIR (%)	6.3
Calving Ease DTRS (%)	6.9
Birth Weight (kg)	-1.7
Actual Birth Wt. (kg)	26

200 Day Weight (kg)	22
400 Day Weight (kg)	43
200 Day Milk (kg)	15
Actual Scrotal Size (cm)	36.5

Eye Muscle Area (sq cm)	2.4
Terminal Index	24
Self Replacing Index	32
Dam's Udder/ Teat Rating	9/8



NOTES: Don't overlook this one!. Dark attractive bull scoring very high on ease of calving and birth weight EBV's. His dam is another first calf heifer from the good Pansy family scoring perfect on udder/teats. Light birthweight bull.

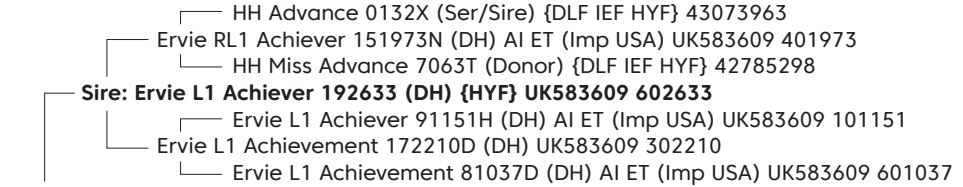
LOT 15 TOWFORD ACHIEVER 333290

b.10/4/2023

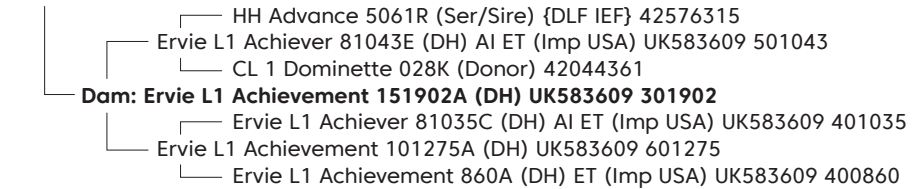
Calving Ease DIR (%)	2.2
Calving Ease DTRS (%)	4
Birth Weight (kg)	0.8
Actual Birth Wt. (kg)	40

200 Day Weight (kg)	31
400 Day Weight (kg)	55
200 Day Milk (kg)	22
Actual Scrotal Size (cm)	41

Eye Muscle Area (sq cm)	2.9
Terminal Index	27
Self Replacing Index	34
Dam's Udder/ Teat Rating	6/7



TOWFORD ACHIEVER 333290 UK561976 403290



NOTES: Good stamp of a bull from the Achievement A family.

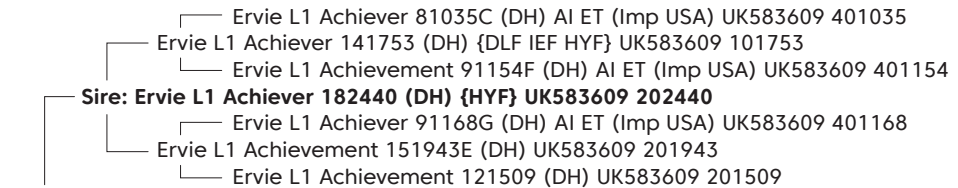
LOT 16 ERVIE L1 ACHIEVER 233218

b.29/5/2023

Calving Ease DIR (%)	0.6
Calving Ease DTRS (%)	0.3
Birth Weight (kg)	2.1
Actual Birth Wt. (kg)	42

200 Day Weight (kg)	37
400 Day Weight (kg)	67
200 Day Milk (kg)	19
Actual Scrotal Size (cm)	36

Eye Muscle Area (sq cm)	3.2
Terminal Index	30
Self Replacing Index	36
Dam's Udder/ Teat Rating	6/6



ERVIE L1 ACHIEVER 233218 (DH) UK583609 303218



NOTES: Good fleshy type of bull. Second calf from a good Achievement G cow.

LOT 17 TOWFORD ACHIEVER 333261

b.2/4/2023

Calving Ease DIR (%)	1.1
Calving Ease DTRS (%)	5.1
Birth Weight (kg)	0.7
Actual Birth Wt. (kg)	38

200 Day Weight (kg)	32
400 Day Weight (kg)	60
200 Day Milk (kg)	19
Actual Scrotal Size (cm)	39

Eye Muscle Area (sq cm)	2.5
Terminal Index	29
Self Replacing Index	36
Dam's Udder/ Teat Rating	



NOTES: Stylish bull from the Achievement A family. Heifers first calf. Light birthweight bull.

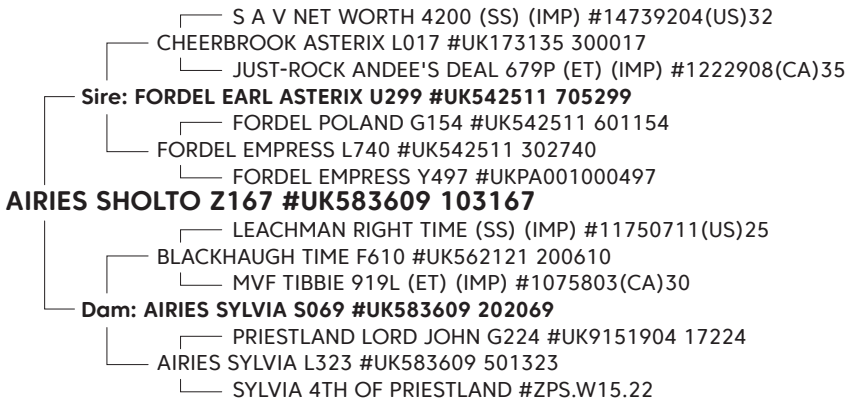
LOT 18 AIRIES SHOLTO Z167

b.6/5/2023

Calving Ease DIR (%)	0.3
Calving Ease DTRS (%)	1.3
Birth Weight (kg)	1.1
Actual Birth Wt. (kg)	30

200 Day Weight (kg)	37
400 Day Weight (kg)	64
200 Day Milk (kg)	14
Actual Scrotal Size (cm)	40.5

Eye Muscle Area (sq cm)	4.8
Terminal Index	31
Self Replacing Index	43
Dam's Udder/ Teat Rating	9/9



NOTES: Deep bodied son of Earl Astrix from a perfect uddered dam. Light birthweight bull.



LOT 2



LOT 3



LOT 6



LOT 21



LOT 39



LOT 43

LOT 19 ERVIE L1 ACHIEVER 233199 b.22/5/2023

Calving Ease DIR (%)	-0.1
Calving Ease DTRS (%)	5
Birth Weight (kg)	1.8
Actual Birth Wt. (kg)	40

200 Day Weight (kg)	34
400 Day Weight (kg)	62
200 Day Milk (kg)	18
Actual Scrotal Size (cm)	37.5

Eye Muscle Area (sq cm)	2.9
Terminal Index	27
Self Replacing Index	33
Dam's Udder/ Teat Rating	5/7



NOTES: Good type of bull. From an attractive Achievement A cow.

LOT 20 TOWFORD ACHIEVER 463270 b.9/4/2023

Calving Ease DIR (%)	1.4
Calving Ease DTRS (%)	3.4
Birth Weight (kg)	1.2
Actual Birth Wt. (kg)	41

200 Day Weight (kg)	33
400 Day Weight (kg)	60
200 Day Milk (kg)	15
Actual Scrotal Size (cm)	38

Eye Muscle Area (sq cm)	3.6
Terminal Index	28
Self Replacing Index	35
Dam's Udder/ Teat Rating	



NOTES: Good type of active and fertile sort of bull from the Countess family. Heifers first calf. Not to be overlooked!

LOT 21 TOWFORD ACHIEVER 333349

b.23/5/2023

Calving Ease DIR (%)	2.3
Calving Ease DTRS (%)	5.3
Birth Weight (kg)	1.1
Actual Birth Wt. (kg)	43

200 Day Weight (kg)	31
400 Day Weight (kg)	63
200 Day Milk (kg)	16
Actual Scrotal Size (cm)	38

Eye Muscle Area (sq cm)	2.2
Terminal Index	31
Self Replacing Index	40
Dam's Udder/ Teat Rating	7/7



NOTES: Attractive dark & fleshy bull. Another from a good old Pansy cow. Good balanced set of EBV's and high maternal.

LOT 22 ERVIE L1 ADVANCE 233140

b.19/5/2023

Calving Ease DIR (%)	0.8
Calving Ease DTRS (%)	3.6
Birth Weight (kg)	0.2
Actual Birth Wt. (kg)	36

200 Day Weight (kg)	34
400 Day Weight (kg)	66
200 Day Milk (kg)	18
Actual Scrotal Size (cm)	37.5

Eye Muscle Area (sq cm)	3.1
Terminal Index	28
Self Replacing Index	36
Dam's Udder/ Teat Rating	9/9



NOTES: Nice fleshy type of bull who just wouldn't pose for a photo! Dam is a perfect uddered Topsy cow. Light birthweight bull.

LOT 23 ERVIE L1 ADVANCE 233197 b.21/5/2023

Calving Ease DIR (%)	2.8
Calving Ease DTRS (%)	2.1
Birth Weight (kg)	1.7
Actual Birth Wt. (kg)	43

200 Day Weight (kg)	35
400 Day Weight (kg)	63
200 Day Milk (kg)	16
Actual Scrotal Size (cm)	33

Eye Muscle Area (sq cm)	1.6
Terminal Index	24
Self Replacing Index	30
Dam's Udder/ Teat Rating	6/6



NOTES: Much like his sire, a tremendous deep and fleshy bull from a very good Peach cow. Dam has bred sons to £3000 twice.

LOT 24 AIRIES SALVADOR Z177 b.19/5/2023

Calving Ease DIR (%)	-2.4
Calving Ease DTRS (%)	5
Birth Weight (kg)	3.3
Actual Birth Wt. (kg)	34

200 Day Weight (kg)	49
400 Day Weight (kg)	88
200 Day Milk (kg)	15
Actual Scrotal Size (cm)	34

Eye Muscle Area (sq cm)	5.4
Terminal Index	42
Self Replacing Index	54
Dam's Udder/ Teat Rating	9/9



NOTES: Smart Diablo son from a perfect uddered first calf heifer by Earl Astrix. Light birthweight bull.

LOT 25 ERVIE L1 ACHIEVER 233133 b.18/5/2023

Calving Ease DIR (%)	3.4
Calving Ease DTRS (%)	1.2
Birth Weight (kg)	0.9
Actual Birth Wt. (kg)	37

200 Day Weight (kg)	32
400 Day Weight (kg)	54
200 Day Milk (kg)	20
Actual Scrotal Size (cm)	38

Eye Muscle Area (sq cm)	2.9
Terminal Index	32
Self Replacing Index	36
Dam's Udder/ Teat Rating	7/8



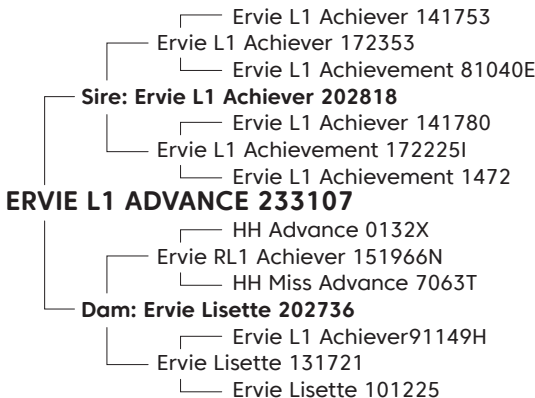
NOTES: Good set of balanced figures. Light birthweight bull.

LOT 26 ERVIE L1 ADVANCE 233107 b.7/5/2023

Calving Ease DIR (%)	
Calving Ease DTRS (%)	
Birth Weight (kg)	
Actual Birth Wt. (kg)	30

200 Day Weight (kg)	
400 Day Weight (kg)	
200 Day Milk (kg)	
Actual Scrotal Size (cm)	37.5

Eye Muscle Area (sq cm)	
Terminal Index	
Self Replacing Index	
Dam's Udder/ Teat Rating	8/8



NOTES: From an Achievement A family cow with good udder/teats. Light birthweight bull. Due to an input error in 2023 this bull is not pedigree registered. Can be late registered if required.

LOT 27 TOWFORD ACHIEVER 463354

b.11/7/2023

Calving Ease DIR (%)	4.2
Calving Ease DTRS (%)	3.9
Birth Weight (kg)	0.7
Actual Birth Wt. (kg)	45

200 Day Weight (kg)	32
400 Day Weight (kg)	62
200 Day Milk (kg)	21
Actual Scrotal Size (cm)	38

Eye Muscle Area (sq cm)	2.5
Terminal Index	29
Self Replacing Index	36
Dam's Udder/ Teat Rating	



NOTES: Good type of bull from a milky Achievement E heifer.

LOT 28 ERVIE L1 ACHIEVER 233195

b.21/5/2023

Calving Ease DIR (%)	4.5
Calving Ease DTRS (%)	5.7
Birth Weight (kg)	0.1
Actual Birth Wt. (kg)	32

200 Day Weight (kg)	32
400 Day Weight (kg)	61
200 Day Milk (kg)	19
Actual Scrotal Size (cm)	36

Eye Muscle Area (sq cm)	3
Terminal Index	28
Self Replacing Index	37
Dam's Udder/ Teat Rating	9/9



NOTES: Good heifer bull. Second calf from a good uddered Achievement A cow. Light birthweight bull.

LOT 29 ERVIE L1 ACHIEVER 233207 b.25/5/2023

Calving Ease DIR (%)	2.8
Calving Ease DTRS (%)	0.4
Birth Weight (kg)	0.3
Actual Birth Wt. (kg)	38

200 Day Weight (kg)	31
400 Day Weight (kg)	50
200 Day Milk (kg)	22
Actual Scrotal Size (cm)	36

Eye Muscle Area (sq cm)	1.2
Terminal Index	22
Self Replacing Index	26
Dam's Udder/ Teat Rating	4/4



NOTES: From Achievement E family. Light birthweight bull.

LOT 30 AIRIES SHOLTO Z173 b. 23/5/2023

Calving Ease DIR (%)	
Calving Ease DTRS (%)	
Birth Weight (kg)	
Actual Birth Wt. (kg)	35

200 Day Weight (kg)	
400 Day Weight (kg)	
200 Day Milk (kg)	
Actual Scrotal Size (cm)	38

Eye Muscle Area (sq cm)	
Terminal Index	
Self Replacing Index	
Dam's Udder/ Teat Rating	8/8



NOTES: Earl Astrix son with a good style & outlook from a SAV Solid Gold daughter. Light birthweight bull. Pedigree registered bull. EBV figures will be updated on next data run.

LOT 31 ERVIE L1 ADVANCE 233258 b.2/7/2023

Calving Ease DIR (%)	6.1
Calving Ease DTRS (%)	4.2
Birth Weight (kg)	-0.2
Actual Birth Wt. (kg)	39

200 Day Weight (kg)	30
400 Day Weight (kg)	62
200 Day Milk (kg)	17
Actual Scrotal Size (cm)	38

Eye Muscle Area (sq cm)	3.3
Terminal Index	31
Self Replacing Index	38
Dam's Udder/ Teat Rating	6/6



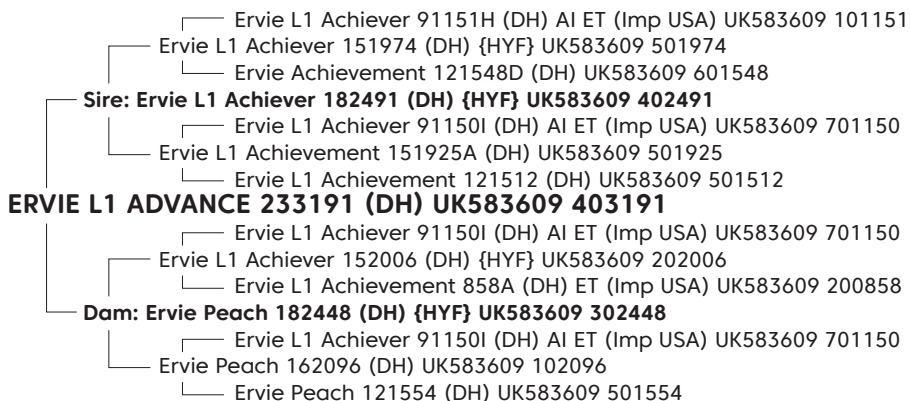
NOTES: Another heifer bull candidate from a nice young Narcissi cow. Good eye muscle. Light birthweight bull.

LOT 32 ERVIE L1 ADVANCE 233191 b. 19/5/2023

Calving Ease DIR (%)	4.3
Calving Ease DTRS (%)	-2.1
Birth Weight (kg)	0.1
Actual Birth Wt. (kg)	37

200 Day Weight (kg)	29
400 Day Weight (kg)	54
200 Day Milk (kg)	17
Actual Scrotal Size (cm)	35.5

Eye Muscle Area (sq cm)	2.2
Terminal Index	25
Self Replacing Index	27
Dam's Udder/ Teat Rating	6/6



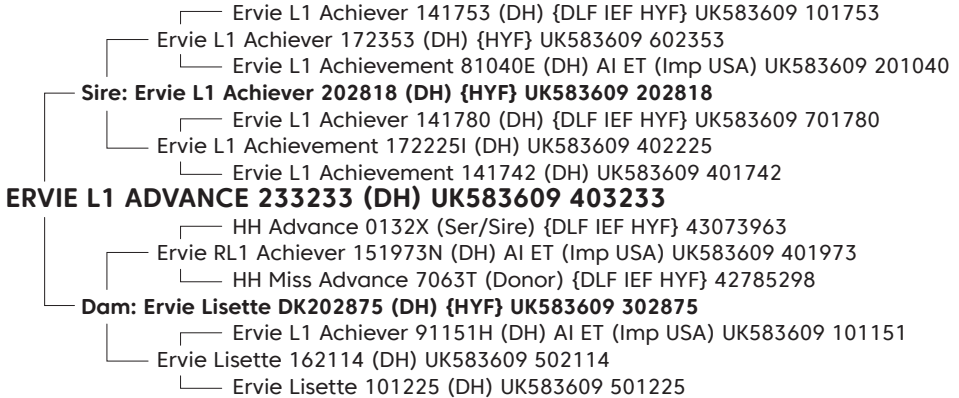
NOTES: Easy fleshing with good calving ease from a young Peach cow. Light birthweight bull.

LOT 33 ERVIE L1 ADVANCE 233233 b.7/6/2023

Calving Ease DIR (%)	-3.5
Calving Ease DTRS (%)	1.6
Birth Weight (kg)	3.8
Actual Birth Wt. (kg)	39

200 Day Weight (kg)	43
400 Day Weight (kg)	75
200 Day Milk (kg)	20
Actual Scrotal Size (cm)	34

Eye Muscle Area (sq cm)	3.1
Terminal Index	34
Self Replacing Index	40
Dam's Udder/ Teat Rating	8/8



NOTES: Smart June born bull with an impressive set of figures . Dam is a beautiful good uddered Lisette heifer. Light birthweight bull.

LOT 34 AIRIES SHOLTO Z185 b.30/6/2023

Calving Ease DIR (%)	
Calving Ease DTRS (%)	
Birth Weight (kg)	
Actual Birth Wt. (kg)	40

200 Day Weight (kg)	
400 Day Weight (kg)	
200 Day Milk (kg)	
Actual Scrotal Size (cm)	36.5

Eye Muscle Area (sq cm)	
Terminal Index	
Self Replacing Index	
Dam's Udder/ Teat Rating	8/9



NOTES: Earl Astrix son from a very good SAV Solid Gold daughter. Pedigree registered bull. EBV figures will be updated on next data run.

LOT 35 ERVIE L1 ACHIEVER 233200 b.29/5/2023

Calving Ease DIR (%)	0.8
Calving Ease DTRS (%)	3
Birth Weight (kg)	0.7
Actual Birth Wt. (kg)	39

200 Day Weight (kg)	29
400 Day Weight (kg)	53
200 Day Milk (kg)	16
Actual Scrotal Size (cm)	35

Eye Muscle Area (sq cm)	3.8
Terminal Index	26
Self Replacing Index	31
Dam's Udder/ Teat Rating	7/7

— HH Advance 0132X (Ser/Sire) {DLF IEF HYF} 43073963
 — Ervie RL1 Achiever 151966N (DH) AI ET (Imp USA) UK583609 401966
 — HH Miss Advance 7063T (Donor) {DLF IEF HYF} 42785298
Sire: Ervie L1 Achiever 202813 (DH) {HYF} UK583609 402813
 — Ervie L1 Achiever 91167K (DH) AI ET (Imp USA) UK583609 301167
 — Ervie Achievement 121548D (DH) UK583609 601548
 — Ervie L1 Achievement 81037D (DH) AI ET (Imp USA) UK583609 601037
ERVIE L1 ACHIEVER 233220 (DH) UK583609 503220

— HH Advance 5161R (Ser/Sire) {DLF IEF} 42576417
 — Ervie L1 Achiever 91150I (DH) AI ET (Imp USA) UK583609 701150
 — CL 1 Dominette 3136N (Donor) {DLF IEF HYF} 42385267
Dam: Ervie L1 Achievement 162200A (DH) UK583609 702200
 — HH Advance 399N (Ser/Sire) {DLF IEF} 42370328
 — Ervie L1 Achievement 860A (DH) ET (Imp USA) UK583609 400860
 — HH Miss Advance 351N 1ET (Donor) {DLF IEF} 42370280

NOTES: Good productive Achievement A dam. Light birthweight bull.

LOT 36 TOWFORD ACHIEVER 333355 b.11/7/2023

Calving Ease DIR (%)	0.6
Calving Ease DTRS (%)	6.1
Birth Weight (kg)	1.5
Actual Birth Wt. (kg)	45

200 Day Weight (kg)	38
400 Day Weight (kg)	71
200 Day Milk (kg)	22
Actual Scrotal Size (cm)	39

Eye Muscle Area (sq cm)	3.2
Terminal Index	31
Self Replacing Index	40
Dam's Udder/ Teat Rating	

— HH Advance 0132X (Ser/Sire) {DLF IEF HYF} 43073963
 — Ervie RL1 Achiever 151973N (DH) AI ET (Imp USA) UK583609 401973
 — HH Miss Advance 7063T (Donor) {DLF IEF HYF} 42785298
Sire: Ervie L1 Achiever 192633 (DH) {HYF} UK583609 602633
 — Ervie L1 Achiever 91151H (DH) AI ET (Imp USA) UK583609 101151
 — Ervie L1 Achievement 172210D (DH) UK583609 302210
 — Ervie L1 Achievement 81037D (DH) AI ET (Imp USA) UK583609 601037
TOWFORD ACHIEVER 333355 (DH) UK561976 603355

— HH Advance 0132X (Ser/Sire) {DLF IEF HYF} 43073963
 — Ervie RL1 Achiever 151966N (DH) AI ET (Imp USA) UK583609 401966
 — HH Miss Advance 7063T (Donor) {DLF IEF HYF} 42785298
Dam: Towford L1 Achievement 213002 (DH) UK561976 303002
 — Ervie L1 Achiever 81043E (DH) AI ET (Imp USA) UK583609 501043
 — Ervie L1 Achievement 151902A (DH) UK583609 301902
 — Ervie L1 Achievement 101275A (DH) UK583609 601275

NOTES: A bull with good structure and conformation from a first calf Achievement A heifer. High maternal.



LOT 37 AIRIES SHOLTO Z169 b.17/5/2023

Calving Ease DIR (%)	
Calving Ease DTRS (%)	
Birth Weight (kg)	
Actual Birth Wt. (kg)	31

200 Day Weight (kg)	
400 Day Weight (kg)	
200 Day Milk (kg)	
Actual Scrotal Size (cm)	37.5

Eye Muscle Area (sq cm)	
Terminal Index	
Self Replacing Index	
Dam's Udder/ Teat Rating	7/7

— S A V NET WORTH 4200 (SS) (IMP) #14739204(US)32
 — CHEERBROOK ASTERIX L017 #UK173135 300017
 — JUST-ROCK ANDEE'S DEAL 679P (ET) (IMP) #1222908(CA)35
Sire: FORDEL EARL ASTERIX U299 #UK542511 705299
 — FORDEL POLAND G154 #UK542511 601154
 — FORDEL EMPRESS L740 #UK542511 302740
 — FORDEL EMPRESS Y497 #UKPA001000497

AIRIES SHOLTO Z169 #UK583609 303169

— ROCKN D AMBUSH 1531 (AI) (IMP) #12396365(US)29
 — AIRIES SENATOR P738 #UK583609 701738
 — AIRIES SYLVIA J126 #UK583609 401126
Dam: AIRIES SYLVIA S068 #UK583609 102068
 — ROCKN D AMBUSH 1531 (AI) (IMP) #12396365(US)29
 — AIRIES SYLVIA P739 #UK583609 101739
 — AIRIES SYLVIA K272 #UK583609 501274

NOTES: Earl Astrix son will make good heifer bull. Light birthweight bull. Pedigree registered bull. EBV figures will be updated on next data run.

LOT 38 TOWFORD ACHIEVEMENT 463284 b.17/4/2023

Calving Ease DIR (%)	3.3
Calving Ease DTRS (%)	3.9
Birth Weight (kg)	1.1
Actual Birth Wt. (kg)	39

200 Day Weight (kg)	37
400 Day Weight (kg)	72
200 Day Milk (kg)	21
Actual Scrotal Size (cm)	36.5

Eye Muscle Area (sq cm)	2.9
Terminal Index	32
Self Replacing Index	40
Dam's Udder/ Teat Rating	

— HH Advance 0132X (Ser/Sire) {DLF IEF HYF} 43073963
 — Ervie RL1 Achiever 151966N (DH) AI ET (Imp USA) UK583609 401966
 — HH Miss Advance 7063T (Donor) {DLF IEF HYF} 42785298
Sire: Towford L1 Achiever 212946 {HYF} UK561976 302946
 — CL 1 Domino 477P (Ser/Sire) 42482436
 — Ervie L1 Achievement 91155H (DH) AI ET (Imp USA) UK583609 501155
 — HH Miss Advance 5209R (Donor) {DLF IEF HYF} 42576465

TOWFORD ACHIEVEMENT 463284 (DH) UK561976 503284

— Ervie L1 Achiever 141753 (DH) {DLF IEF HYF} UK583609 101753
 — Ervie L1 Achiever 172353 (DH) {HYF} UK583609 602353
 — Ervie L1 Achievement 81040E (DH) AI ET (Imp USA) UK583609 201040
Dam: Towford L1 Achievement 213005 (DH) UK561976 603005
 — Ervie L1 Achiever 91147F (DH) AI ET (Imp USA) UK583609 401147
 — Ervie L1 Achievement 162124G (DH) UK583609 102124
 — Ervie L1 Achievement 131703G (DH) UK583609 701703

NOTES: Tremendous deep-bodied, correct bull from the Achievement G family. Look at his set of figures. Heifers first calf. Light birthweight bull.



LOT 39 TOWFORD ACHIEVER 333285

b.10/4/2023

Calving Ease DIR (%)	4.7
Calving Ease DTRS (%)	4.1
Birth Weight (kg)	0.8
Actual Birth Wt. (kg)	41

200 Day Weight (kg)	32
400 Day Weight (kg)	59
200 Day Milk (kg)	24
Actual Scrotal Size (cm)	42

Eye Muscle Area (sq cm)	2.9
Terminal Index	30
Self Replacing Index	37
Dam's Udder/ Teat Rating	6/5



NOTES: Big upstanding bull from the Achievement G family. Good balanced set of figures.

LOT 40 AIRIES SHOLTO Z175

b.22/5/2023

Calving Ease DIR (%)	
Calving Ease DTRS (%)	
Birth Weight (kg)	
Actual Birth Wt. (kg)	32

200 Day Weight (kg)	
400 Day Weight (kg)	
200 Day Milk (kg)	
Actual Scrotal Size (cm)	36

Eye Muscle Area (sq cm)	
Terminal Index	
Self Replacing Index	
Dam's Udder/ Teat Rating	7/8



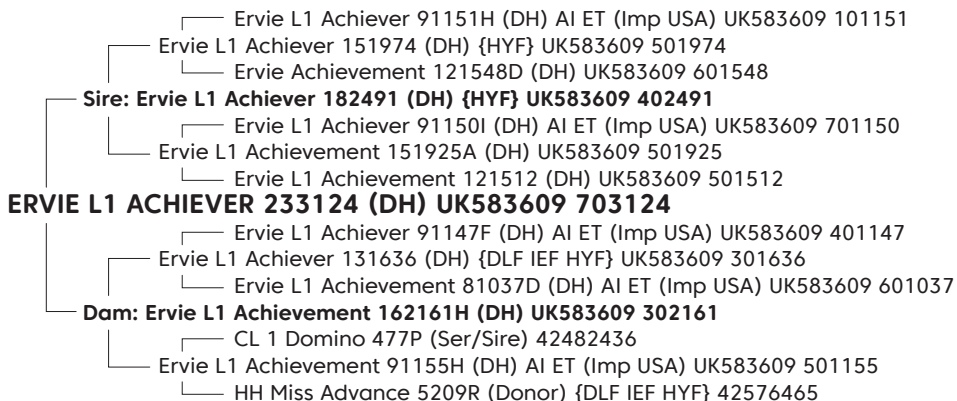
NOTES: Very nice fleshy Earl Astrix son will make a fine heifer bull. Full brother was £3800 in 2022. Light birthweight bull. Pedigree registered bull. EBV figures will be updated on next data run.

LOT 41 ERVIE L1 ACHIEVER 233124 b.15/5/2023

Calving Ease DIR (%)	2.4
Calving Ease DTRS (%)	2
Birth Weight (kg)	2
Actual Birth Wt. (kg)	42

200 Day Weight (kg)	36
400 Day Weight (kg)	61
200 Day Milk (kg)	21
Actual Scrotal Size (cm)	36

Eye Muscle Area (sq cm)	1.6
Terminal Index	23
Self Replacing Index	28
Dam's Udder/ Test Rating	5/5



NOTES: Good dark easy-fleshing bull. Dam is an Achievement H cow. Half brother made £3500 2024 sale.

LOT 42 AIRIES SALVADOR Z174 b.24/5/2023

Calving Ease DIR (%)	
Calving Ease DTRS (%)	
Birth Weight (kg)	
Actual Birth Wt. (kg)	32

200 Day Weight (kg)	
400 Day Weight (kg)	
200 Day Milk (kg)	
Actual Scrotal Size (cm)	41.5

Eye Muscle Area (sq cm)	
Terminal Index	
Self Replacing Index	
Dam's Udder/ Test Rating	8/8



NOTES: Attractive, easy-fleshing son of Diablo from and first calf from an Earl Astrix heifer. Light birthweight bull. Pedigree registered bull. EBV figures will be updated on next data run.

LOT 43 ERVIE L1 ADVANCE 233198 b.20/5/2023

Calving Ease DIR (%)	3.7
Calving Ease DTRS (%)	4.9
Birth Weight (kg)	0.3
Actual Birth Wt. (kg)	35

200 Day Weight (kg)	29
400 Day Weight (kg)	56
200 Day Milk (kg)	19
Actual Scrotal Size (cm)	37.5

Eye Muscle Area (sq cm)	2.6
Terminal Index	26
Self Replacing Index	33
Dam's Udder/ Teat Rating	7/7



NOTES: Good heifer bull prospect from an attractive young Plum cow. Half brother made £3000 2024 sale. Light birthweight bull.

LOT 44 ERVIE L1 ADVANCE 233225 b.3/6/2023

Calving Ease DIR (%)	-1
Calving Ease DTRS (%)	7
Birth Weight (kg)	2
Actual Birth Wt. (kg)	39

200 Day Weight (kg)	40
400 Day Weight (kg)	77
200 Day Milk (kg)	18
Actual Scrotal Size (cm)	36.5

Eye Muscle Area (sq cm)	2.7
Terminal Index	32
Self Replacing Index	40
Dam's Udder/ Teat Rating	7/7



NOTES: June born bull and a great set of figures. Last son of our great 1966 sire and from possibly the best-looking cow in our herd. The dam is a good uddered Lisette cow who has produced sons to £5000 & £3500. High maternal traits. Light birthweight bull.

LOT 45 ERVIE L1 ADVANCE 233236 b.8/6/2023

Calving Ease DIR (%)	1.3
Calving Ease DTRS (%)	4.3
Birth Weight (kg)	0.1
Actual Birth Wt. (kg)	30

200 Day Weight (kg)	26
400 Day Weight (kg)	46
200 Day Milk (kg)	14
Actual Scrotal Size (cm)	32.5

Eye Muscle Area (sq cm)	2
Terminal Index	24
Self Replacing Index	29
Dam's Udder/ Teat Rating	5/6



NOTES: Smart June born bull from a very productive old Pansy cow and a twin to boot!. Light birthweight bull.

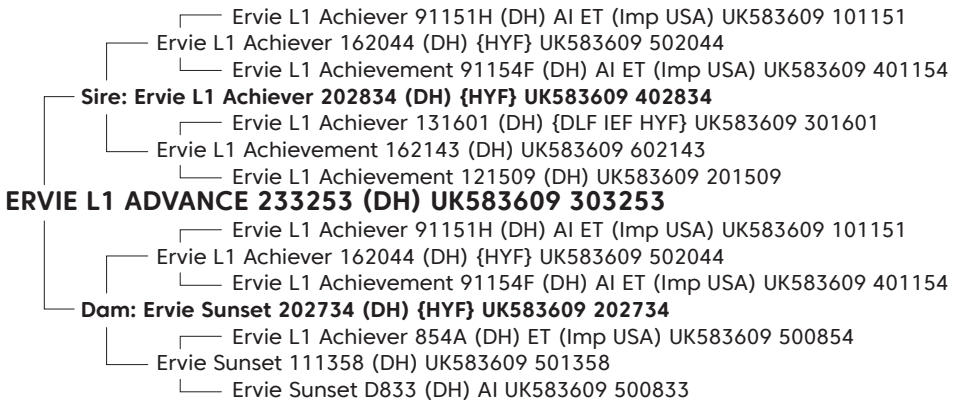


LOT 46 ERVIE L1 ADVANCE 233253 b.21/6/2023

Calving Ease DIR (%)	1.8
Calving Ease DTRS (%)	1.8
Birth Weight (kg)	2.8
Actual Birth Wt. (kg)	45

200 Day Weight (kg)	32
400 Day Weight (kg)	49
200 Day Milk (kg)	18
Actual Scrotal Size (cm)	36.5

Eye Muscle Area (sq cm)	1.1
Terminal Index	24
Self Replacing Index	30
Dam's Udder/ Teat Rating	8/7



NOTES: First calf from a good uddered Sunset heifer.

A SHORT BACKGROUND TO LINE ONE HEREFORD CATTLE

In **Montana** during the early 1800's, 55,000 acres were set aside as Fort Keogh, an Army Outpost, later a remount facility for breeding Cavalry horses and finally as an agriculture research service to assist the agricultural industry in producing food supply. It was at this Miles City station in 1934 that a selection program commenced and the development of inbreeding several different lines with selection emphasis on yearling weights. Of all the different lines developed at Miles City, the most prominent to date has been the **Line Ones**. The foundation cows for the **Line Ones** traced back to stock purchased in 1926 from George M. Miles. The bulls used in the development of the line were half-brothers, Advance Domino 20 and Advance Domino 54, purchased in Colorado. These two foundation sires were strong in Prince Domino blood. Although the **Line One** cattle were developed at the Miles City station and they have remained a prime source of seedstock, several other breeders drew heavily on **Line One** sires starting in the 1940's, and these breeders became suppliers of the **Line One** seedstock in the early 1970's.



Advance Domino 20



Advance Domino 54

ERVIE HEREFORD TRIBE FAMILIES

TRIBE 1 FAMILIES

- **BEAUTY.** Brockloch Beauty 17th purchased from Willie Barclay, East Brockloch, Ayrshire in 1994. This family produced our £4500 sale-topping bull in 2015. Solid cattle.
- **COUNTESS.** This family purchased from Marcus Lury, Oakleaf Herefords in Somerset in 1994. Good family tracing back to Hermitage & Merryhill Herefords in the 1970's.
- **CROCUS.** Roundshaw Crocus 151 purchased from Ben Welsh in 2010. The line goes back to the famous Haven Crocus family through Kilphin and Bowmont herds.
- **BARBARA.** Barncleugh Barbara 5th purchased at Edinburgh in 1977 from Kenneth Kelly. This important family also descended from Haven family.
- **CAROL LILY.** Onguten Carol Lily 39th bought at their herd dispersal in 1997 and has provided us with a top family line since. Full of quality. Bulls sold twice to £4000 in 2014 and another at £4000 again in 2017.
- **BARDA.** Brockloch Barda 14th, another hardy family purchased from Willie Barclay, East Brockloch, Ayrshire in 1994.
- **L1 ACHIEVEMENT K FLUSH.** Result of an embryo flush from a Fort Keoch station dam and a Holden sire in 2008.
- **L1 ACHIEVEMENT I FLUSH.** Result of an embryo flush from a Cooper dam and a Holden sire in 2008.
- **L1 ACHIEVEMENT N FLUSH.** Result of an embryo flush from Beran Bros. in Kansas using a Holden dam and a Holden sire in 2015. Service sires RL1 Achiever 151966N & RL1 Achiever 151973N are from the same flush.
- **L1 ACHIEVEMENT G FLUSH.** Result of an embryo flush from a Holden dam and a Holden sire in 2008. Bulls sold to £5800 in 2011.
- **DOWAGER.** Another good Haven family that came to us with the purchase of Dieulacresse Dowager 3rd in 2007. Top bull sales are £4000 in 2014 and again in 2017.

TRIBE 2 FAMILIES

- **LISETTE.** Findowrie Lisette 5th was a heifer full of Haven bloodlines purchased in Edinburgh 1972 and she established one of the strongest and best families in our herd. This family produced our top two sale prices at £7000 & £8200 in 2018 and our sale-topper in 2020 of £3700 with another at £3200. Also produced our 2021 sale topper at £5000.
- **LAURA.** Weswood Laura 390th was a tremendous daughter of Ervie King Kong we purchased from Clive Davies in 2003. This has become a tremendously important family to us and produced our £7200 sale-topper in 2016. Other top bulls have gone to £5500 in 2011 and our second top 2020 price £3600.
- **GYPSY.** Dovemount Gypsy B22, another Ervie King Kong daughter was purchased in 2006 from George Thorley. The family line goes right back to Marlow breeding and has become a particularly important family to us. Bulls have sold to £4500 in 2019 and £3500 in 2020.
- **L1 ACHIEVEMENT M FLUSH.** Result of an embryo flush from a Holden dam and a Cooper sire in 2015.
- **MODEL.** Sherlowe Model 270th was purchased at the herd dispersal in 1986. Daughter of Wabash Imager 22F and full of good breeding, she has provided us with a very important family.
- **L1 ACHIEVEMENT D FLUSH.** Result of an embryo flush from a Holden dam and a Holden sire in 2005. Bulls sold to £4200 in 2021.



TRIBE 3 FAMILIES

- **PANSY.** Border Pansy K44 was purchased from the Border Herefords herd of Stan & Hellen Quan in 1994 and is definitely well established in the Ervie herd now. The family goes way back to the Marlow herd. Top bulls have sold to £4000 in 2011.
- **NARCISSI.** Studdolph Narcissi J19 was purchased at Hereford from Messrs Thorne in 1975. Easy-fleshing and great milkers, they have been one of our main families over the years.
- **L1 ACHIEVEMENT A FLUSH.** Result of an embryo flush from a Holden dam and a Holden sire in 2005. Our first embryo flush from Jack Holden and what a line of females it has become. Our bull sale topper in 2013 from this family made £4600 and we had one this year at £3500.
- **NOREEN.** Kilphin Noreen J1 was the last heifer from the herd of Tom & Billy Nelson, and we bought her from them in 1994. Good hardy types. Bulls have sold to £4500 in 2013.
- **PLUM.** This family stems from the purchase of Free Town Plum 76th, an excellent daughter of Free Town Foremost, in 1993.
- **OYSTERGIRL.** Sherlowe Oystergirl 66thth was purchased at their herd dispersal in 1986. Another great breeding family. Bulls have sold to £5000 in 2011 and our sale topper in 2014 at £4500.
- **PANSY.** This was our first Pansy line and stems from the purchase of Havenfield Pansy 19th in 1977. This was a big cow when small cattle were all the rage and is a family I value highly.



TRIBE 4 FAMILIES

- **PEACH.** Harrold Peach 16th was purchased in Edinburgh from Messrs Tusting Partners, Bedford in 1972 and has gone on to become our best known and most numerous family. This female line is so strong and has produced foundation females for many herds. Bulls sold to £4000 in 2011 and £4800 in 2016.
- **L1 ACHIEVEMENT F FLUSH.** Result of an embryo flush from a Holden dam and a Holden sire in 2009. Bulls sold to £5200 in 2011.
- **ROULETTE.** The purchase of Border Roulette B37, sired by Ervie Classic U150, from Stan & Hellen Quan in 2006 was the source of this good family line.
- **L1 ACHIEVEMENT H FLUSH.** Result of an embryo flush from a Holden dam and a Cooper sire in 2009. Lot 107 is from this flush, which also produced two especially important herd sires in Ervie L1 Achiever 91149H and Ervie L1 Achiever 91151H. These bulls had huge influence in establishing the strength of breeding we have in the herd today.



TRIBE 5 FAMILIES

- **TRIBUTE.** This is a great family in our herd and is established from the purchase of Brockloch Tribute 11th in 1994 from Willie Barclay, East Brockloch, Ayrshire. Top bull sales have been our 2019 bull sale topper at £7000 and another at £3000.
- **SUNSET.** Venture Sunset 456 was purchased in Denmark in 2002 from Axel Johansen. The result of an embryo imported from the US, this was our first taste of Line One breeding and is a hardy and reliable family. We used 2 good stock sires from this dam.
- **UNITARIAN.** Aultoun Unitarian 46th was purchased from Graham Stratford, Hampshire, in 1995 and has established a beautiful and productive line of females in our herd. Our 2017 bull sale topper at £6200 was from this family.
- **L1 ACHIEVEMENT E FLUSH.** Result of an embryo flush from Beran Bros., Kansas in 2008 using a Cooper dam and a Holden sire.
- **TOPSY.** From the Wenlock T family and stems from the purchase of a big Bell L 1087 Domino 46R daughter, Wenlock Tabletta in 1993.
- **TRUDY.** Roundshaw Trudy 148, sired by Ervie Classic Lad B620 was purchased from Ben Welsh, Ayrshire in 2010 and has established a good type of cow in our herd.
- **SNOWDROP.** Aultoun Snowdrop 12th was purchased from Graham Stratford in 1994 and the family has stood the test of time with us, producing many good females.
- **SATINA.** Venture Satina was purchased from Axel Johansen, Denmark in 2003 and the family has produced many good cattle for us since then. US genetics.



AIRIES ABERDEEN-ANGUS Est. 2000

We joined the AA Society in 2000 after purchasing a very smart Angus heifer named “Sylvia 4th of Priestland. Over the ensuing years bred Sylvia and her descendants to good Angus bulls, always with the intention of having bulls for my Black Baldie production. Whilst visiting the Denver Stock Show in Colorado, USA in 2005 with the purpose of buying Line One Hereford embryos, I viewed the Aberdeen Angus cattle there and recognised good high maternal traits in those ranch-raised Aberdeen Angus. Since then, we have used a few US Angus bulls through AI and extended our Angus cow numbers to around twenty. We are back to using natural service again and the bulls we buy have US genetics behind them and are the good maternal type for our breeding purposes.

The Airies herd is quite unique for the fact that since the purchase of Sylvia 4th of Priestland, we have not purchased another Aberdeen Angus female. Every cow in the herd traces back to her. Our breeding objectives are to breed a moderate size of cow who will produce a small calf unassisted. The bulls we produce must be suitable for use on either beef or dairy heifers. We do not tolerate high birth weights. The Angus herd we have developed, crosses perfectly with our Herefords and produces valuable and efficient Black Baldie steers and heifers to meet the requirements of the quality UK beef market.



AIRIES APPALOOSA STOCK HORSES

We have available for sale a selection of horses with good cow sense bred-in and suitable for working cattle and sheep.

- **UNBROKEN FILLIES & GELDINGS**
- **LIGHTLY BACKED HORSES READY TO PROGRESS**
- **BROOD FILLIES & MARES**
- **WESTERN SADDLES & TACK CAN BE INCLUDED**



Enquiries to:

ELLEN	07841033748	ellenginadouglas@outlook.com
OLIVIA	07311297272	olivia.doug3@gmail.com
KRISTINA	07759090000	kikidouglas28@gmail.com



RAISING PROFITABLE, QUALITY, NATURAL BEEF

Whether your herd is beef suckler or dairy, using Ervie Line One Hereford genetics can reduce herd costs & improve herd profit.

“The advantages of high performing, line-bred cattle are, increased predictability, uniformity, as well as the hybrid vigour generated in their progeny by an outcross either within breed or between breeds.”

OUR MESSAGE TO POTENTIAL SUCKLER HERD BULL CUSTOMERS:

Ervie bulls are high in maternal traits, line-bred and consistent. The best ervie bulls will exploit fully the hybrid vigour from your herd to enhance profit.

THESE ARE YOUR ADVANTAGES!

- ▶ Improved female replacement type
- ▶ Improved calving ease
- ▶ Improved udders & teats
- ▶ Improved cow fertility
- ▶ Improved calf uniformity
- ▶ Improved feed efficiency
- ▶ Improved temperament
- ▶ Improved cow longevity

OUR STOCK BULLS ARE SELECTED FOR:

- ▶ High natural performance to improve yearling growth
- ▶ Medium or light birth weights to maintain calving ease
- ▶ Good testicles to improve herd fertility
- ▶ Good or excellent uddered dams to improve udders type
- ▶ Good milking dams to maintain milking ability
- ▶ Structurally sound to maintain good beef conformation
- ▶ Genetically balanced for profit-affecting traits

OUR MESSAGE TO POTENTIAL DAIRY HERD BULL CUSTOMERS:

OUR DAIRY CUSTOMERS DEMAND SOUND FEET, HIGH FERTILITY & MODERATE BIRTHWEIGHTS. ERVIE L1 HEREFORD BULLS FIT THE BILL FOR THESE TRAITS PLUS EXTRAS!

Choose light-birthweight Ervie L1 Hereford bulls to reduce costs & enhance herd profit:

THESE ARE YOUR ADVANTAGES!

- ▶ Uncomplicated births allow your cows to hit their true yield potential.
- ▶ Uncomplicated births result in vigorous & healthy calves.
- ▶ Uncomplicated births result in better conception rates.
- ▶ Uncomplicated births result in lower vet bills.
- ▶ Overall reduced rearing costs.
- ▶ Nothing converts grass to beef like a true Hereford

GAIN THE ADVANTAGE ...USE ERVIE LINE ONE